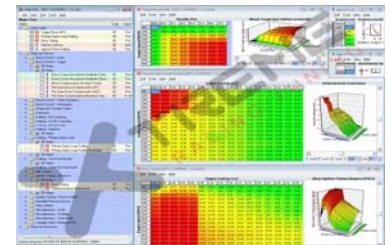


## XRT ECU Reflashing

- ❖ Utilised all stock ECU functions
- ❖ Plug and Play
- ❖ Windows programmable Software w/ Direct cable Connection
- ❖ Uses All Factory Sensors
- ❖ Software Logging
- ❖ Software Diagnostics
- ❖ Vehicular performance review
- ❖ Dyno-ing



Adjustment of Speed Limit

Adjustment of Rev Limit

Adjustment of Intercooler Water Spray, if applicable

Adjustment for the activation of Coolant Fans

Configure Air Temperature compensation Strategies

- Boost
- Ignition
- Waste-gate

Configure Coolant Temperatures compensation Strategies

- Boost
- Ignition

Configure Boost Control Strategies

- Boost
- Boost Limit
- Turbo Dynamics

Configure Waste-gate Strategies

- Waste-gate Duty Cycles
- Turbo Dynamics

Configure data logging capability

- Log all available sensors
- Boost, MAF, Ignition, Fuel, Knock, Waste-gate, and many more variables (20+)

Configure Variable Cam Control tuning for Intake and Exhaust, if applicable

Configure Fuelling Strategies

- Cruising AFR
- Fuel Enrichment
- Fuel Maps
- Injector Flow & Latency
- MAF Tube Resizing

Configure Idle Control Strategies

Configure Knock Strategies

Configure Ignition Strategies

Diagnose Check Engine Light status

Launch and Flat-shifting Control Additions, if applicable

- Valet Mode
- Launch speed
- Launch & Flat-shift RPM

### Advance Tuning

XRT have access to all tuning feature of the Engine computer, once supported, offering many tuning capabilities to the customer and their needs.

Support for Launch & Flat-shift control can be added.

Inclusive of XRT Tuning, based on the customer needs, we can produce Edge-Tuned Cars that are very reliable, stable and powerful on the modifications applied.

### Customer's Needs

The customer has the ability to request the level of tuning needed, allowing for driveability, power and excitement.

Car can be tuned for gas performance to race spec. At XRT, we call it **X-spec**. We love to know we have **X-Touch** a car, especially when we Edge-Tuned

### ECU Capabilities

The Stock ECU is a very powerful ECU, handling many functions and features. Depending on your needs, the stock ECU is more than capable of supporting your needs for more power, with reliability and smoothness; all done economically in respect to an aftermarket Engine Management System.

Power levels of over 350WHP are support for your daily needs.

### Support

- 2001+ Subaru Impreza WRX/STI
- 2002+ Subaru Forester
- 2001+ Subaru Legacy Turbocharged
- 2004+ Subaru Legacy 3.0R
- 2001+ Mitsubishi Galant, EVO, Lancer, AirTek, Eclipse